

REVIEW for QUIZ Unit 3

Literal Equations, Plotting points, graphing using a table of values, graphing and writing equations of vertical and horizontal lines.

Name: Key

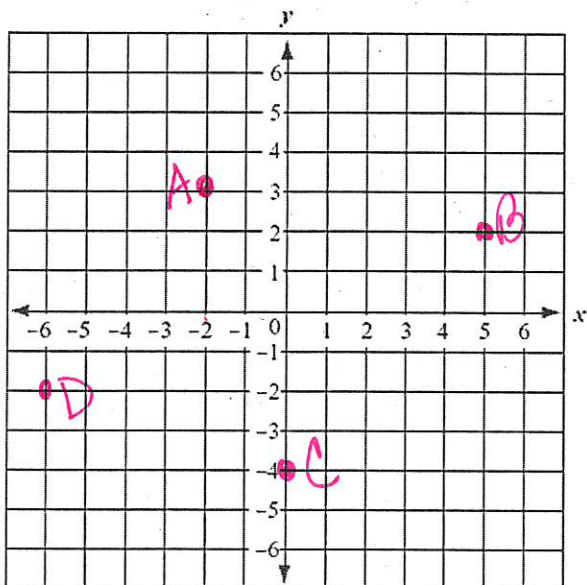
1. Solve the following equation for x :

$$-2x + 4y = 16$$

$$\frac{-2x}{-2} = \frac{16 - 4y}{-2}$$

$$x = -8 + 2y$$

2. Plot the following points

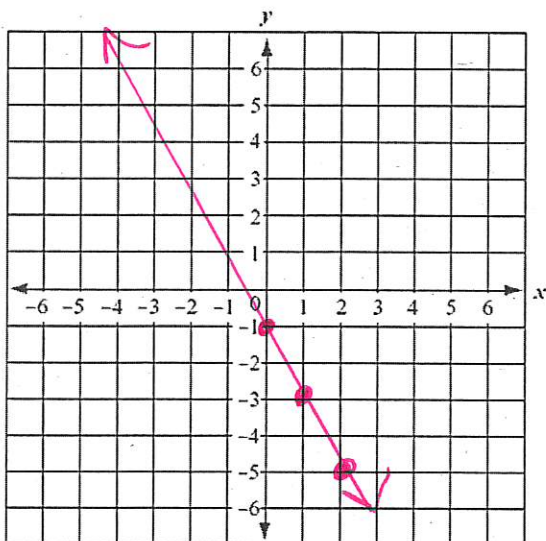


A (-2, 3)

B (5, 2)

C (0, -4)

D (-6, -2)



3.

Graph this equation (line) using a table of values:

$$y + 2x = -1$$

$$y = -1 - 2x$$

x		y
0	$-1 - 2(0)$	-1
1	$-1 - 2(1) = -3$	-3
2	$-1 - 2(2) = -5$	-5

$$-1 - 4$$

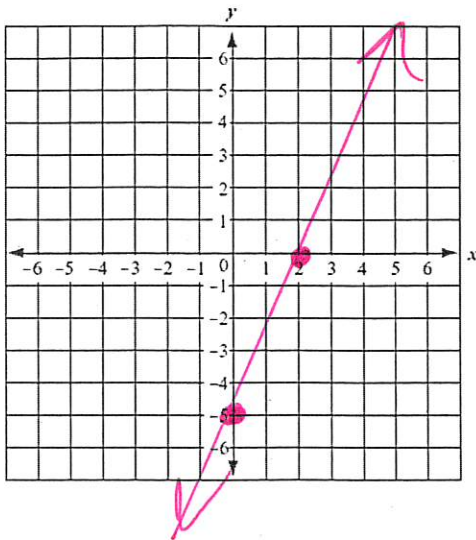
4. Graph the following equation using x and y intercepts:

$$5x - 2y = 10$$

$$\begin{aligned} 5(0) - 2y &= 10 \\ -2y &= 10 \\ y &= -5 \end{aligned} \quad \left. \begin{aligned} 5x - 2(0) &= 10 \\ 5x &= 10 \\ x &= 2 \end{aligned} \right\}$$

$(0, -5)$ $(2, 0)$

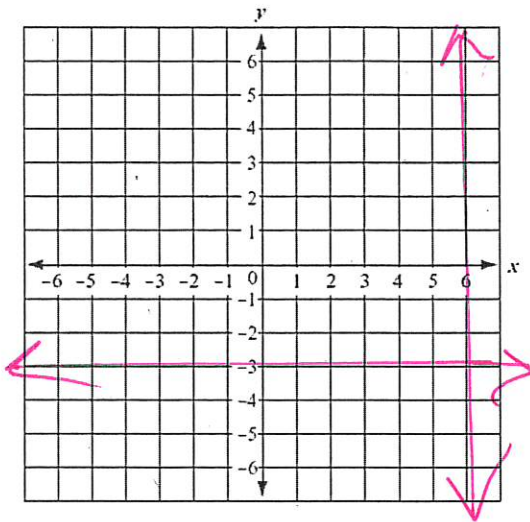
The two intercepts are: (,) (,)



5. Graph the following lines:

$x = 6$

$y = -3$



6. Write the equations of the lines graphed:

A

Line A: $x = 5$

Line B: $y = -2$

